



PRODUCT FAMILY GUIDE



ONYX

onyxgfx.com

Colyer.

your print and digital technology partner

WHY ONYX

Leading the industry since 1989

Onyx Graphics is the market leader in providing fast, proven and reliable wide-format software solutions including RIP software, print workflow and business tools.

Did you know?

Onyx Graphics, Inc. has called Salt Lake City, Utah, its home since the company formed in 1989 and shortly afterward introduced the world's first wide-format RIP. Since then, the company has grown to new heights by introducing new innovative products, including print workflow, nesting, and business management solutions.

Our uniqueness comes from a continual dedication to R&D to provide best-in-class solutions to our worldwide customer base.

Onyx Graphics enjoys the largest global distribution network of over 400 local ONYX resellers, 125+ manufacturer partnerships, and you'll find Onyx Graphics personnel around the globe to support each diverse and unique market.

Our core objective is to enable ONYX users unrivaled success.

"Your shop will never outgrow ONYX. However you want to print, trust ONYX to have a solution."

- Kevin M. Murphy, President & CEO.



Contents:

1. Industry applications
2. Influencing global color
3. Our latest version
4. Subscriptions
5. Site-wide solutions
6. Print workflow
7. Business intelligence
8. Nesting
9. RIP products
10. Advantage program

INDUSTRY APPLICATIONS

A complete tool set for any print

ONYX software is designed specifically for wide-format printing. Innovative color tools give Onyx Graphics the leading edge in superior output across all digital print applications.



The right tools:

ONYX addresses the unique challenge of multiple applications with innovative color tools including:

- ICC profiling
- Colorways
- Swatch Books
- Step and Repeat
- ColorCheck
- AccuBoost
- PosterColor 2.0
- DeviceLink+

ONYX ColorCheck Report

Profile: Profile 5
Media: 300 DPI (200 Resolution)
Mode: CMYK Space RGB
ColorCheck Status: 2019 ColorCheck
Exported: 2023 ColorCheck
Date: 2023-10-10 10:19:56

Verification Status: PASS

Media: Substrate
Max. ΔE of 1st Pass: 0.1
Max. ΔE of 2nd Pass: 0.1
Max. ΔE of 3rd Pass: 0.1
Max. ΔE of 4th Pass: 0.1
Max. ΔE of 5th Pass: 0.1
Max. ΔE of 6th Pass: 0.1
Max. ΔE of 7th Pass: 0.1
Max. ΔE of 8th Pass: 0.1

ColorCheck ID	ColorCheck Name	Max. ΔE of 1st Pass	Max. ΔE of 2nd Pass	Max. ΔE of 3rd Pass	Max. ΔE of 4th Pass	Max. ΔE of 5th Pass	Max. ΔE of 6th Pass	Max. ΔE of 7th Pass	Max. ΔE of 8th Pass
001	Black	0.1	0.1	0.1	0.1	0.1	0.1	0.1	0.1
002	White	0.1	0.1	0.1	0.1	0.1	0.1	0.1	0.1
003	Yellow	0.1	0.1	0.1	0.1	0.1	0.1	0.1	0.1
004	Cyan	0.1	0.1	0.1	0.1	0.1	0.1	0.1	0.1
005	Magenta	0.1	0.1	0.1	0.1	0.1	0.1	0.1	0.1
006	Red	0.1	0.1	0.1	0.1	0.1	0.1	0.1	0.1
007	Green	0.1	0.1	0.1	0.1	0.1	0.1	0.1	0.1
008	Blue	0.1	0.1	0.1	0.1	0.1	0.1	0.1	0.1
009	Orange	0.1	0.1	0.1	0.1	0.1	0.1	0.1	0.1
010	Purple	0.1	0.1	0.1	0.1	0.1	0.1	0.1	0.1
011	Pink	0.1	0.1	0.1	0.1	0.1	0.1	0.1	0.1
012	Light Blue	0.1	0.1	0.1	0.1	0.1	0.1	0.1	0.1
013	Light Green	0.1	0.1	0.1	0.1	0.1	0.1	0.1	0.1
014	Light Red	0.1	0.1	0.1	0.1	0.1	0.1	0.1	0.1
015	Light Yellow	0.1	0.1	0.1	0.1	0.1	0.1	0.1	0.1
016	Light Cyan	0.1	0.1	0.1	0.1	0.1	0.1	0.1	0.1
017	Light Magenta	0.1	0.1	0.1	0.1	0.1	0.1	0.1	0.1
018	Light Blue-Green	0.1	0.1	0.1	0.1	0.1	0.1	0.1	0.1
019	Light Red-Orange	0.1	0.1	0.1	0.1	0.1	0.1	0.1	0.1
020	Light Yellow-Green	0.1	0.1	0.1	0.1	0.1	0.1	0.1	0.1
021	Light Cyan-Blue	0.1	0.1	0.1	0.1	0.1	0.1	0.1	0.1
022	Light Magenta-Red	0.1	0.1	0.1	0.1	0.1	0.1	0.1	0.1
023	Light Blue-Purple	0.1	0.1	0.1	0.1	0.1	0.1	0.1	0.1
024	Light Green-Yellow	0.1	0.1	0.1	0.1	0.1	0.1	0.1	0.1
025	Light Red-Pink	0.1	0.1	0.1	0.1	0.1	0.1	0.1	0.1
026	Light Yellow-Orange	0.1	0.1	0.1	0.1	0.1	0.1	0.1	0.1
027	Light Cyan-Green	0.1	0.1	0.1	0.1	0.1	0.1	0.1	0.1
028	Light Magenta-Purple	0.1	0.1	0.1	0.1	0.1	0.1	0.1	0.1
029	Light Blue-Cyan	0.1	0.1	0.1	0.1	0.1	0.1	0.1	0.1
030	Light Green-Cyan	0.1	0.1	0.1	0.1	0.1	0.1	0.1	0.1
031	Light Red-Cyan	0.1	0.1	0.1	0.1	0.1	0.1	0.1	0.1
032	Light Yellow-Cyan	0.1	0.1	0.1	0.1	0.1	0.1	0.1	0.1
033	Light Cyan-White	0.1	0.1	0.1	0.1	0.1	0.1	0.1	0.1
034	Light Magenta-White	0.1	0.1	0.1	0.1	0.1	0.1	0.1	0.1
035	Light Blue-White	0.1	0.1	0.1	0.1	0.1	0.1	0.1	0.1
036	Light Green-White	0.1	0.1	0.1	0.1	0.1	0.1	0.1	0.1
037	Light Red-White	0.1	0.1	0.1	0.1	0.1	0.1	0.1	0.1
038	Light Yellow-White	0.1	0.1	0.1	0.1	0.1	0.1	0.1	0.1
039	Light Cyan-White	0.1	0.1	0.1	0.1	0.1	0.1	0.1	0.1
040	Light Magenta-White	0.1	0.1	0.1	0.1	0.1	0.1	0.1	0.1
041	Light Blue-White	0.1	0.1	0.1	0.1	0.1	0.1	0.1	0.1
042	Light Green-White	0.1	0.1	0.1	0.1	0.1	0.1	0.1	0.1
043	Light Red-White	0.1	0.1	0.1	0.1	0.1	0.1	0.1	0.1
044	Light Yellow-White	0.1	0.1	0.1	0.1	0.1	0.1	0.1	0.1
045	Light Cyan-White	0.1	0.1	0.1	0.1	0.1	0.1	0.1	0.1
046	Light Magenta-White	0.1	0.1	0.1	0.1	0.1	0.1	0.1	0.1
047	Light Blue-White	0.1	0.1	0.1	0.1	0.1	0.1	0.1	0.1
048	Light Green-White	0.1	0.1	0.1	0.1	0.1	0.1	0.1	0.1
049	Light Red-White	0.1	0.1	0.1	0.1	0.1	0.1	0.1	0.1
050	Light Yellow-White	0.1	0.1	0.1	0.1	0.1	0.1	0.1	0.1
051	Light Cyan-White	0.1	0.1	0.1	0.1	0.1	0.1	0.1	0.1
052	Light Magenta-White	0.1	0.1	0.1	0.1	0.1	0.1	0.1	0.1
053	Light Blue-White	0.1	0.1	0.1	0.1	0.1	0.1	0.1	0.1
054	Light Green-White	0.1	0.1	0.1	0.1	0.1	0.1	0.1	0.1
055	Light Red-White	0.1	0.1	0.1	0.1	0.1	0.1	0.1	0.1
056	Light Yellow-White	0.1	0.1	0.1	0.1	0.1	0.1	0.1	0.1
057	Light Cyan-White	0.1	0.1	0.1	0.1	0.1	0.1	0.1	0.1
058	Light Magenta-White	0.1	0.1	0.1	0.1	0.1	0.1	0.1	0.1
059	Light Blue-White	0.1	0.1	0.1	0.1	0.1	0.1	0.1	0.1
060	Light Green-White	0.1	0.1	0.1	0.1	0.1	0.1	0.1	0.1
061	Light Red-White	0.1	0.1	0.1	0.1	0.1	0.1	0.1	0.1
062	Light Yellow-White	0.1	0.1	0.1	0.1	0.1	0.1	0.1	0.1
063	Light Cyan-White	0.1	0.1	0.1	0.1	0.1	0.1	0.1	0.1
064	Light Magenta-White	0.1	0.1	0.1	0.1	0.1	0.1	0.1	0.1
065	Light Blue-White	0.1	0.1	0.1	0.1	0.1	0.1	0.1	0.1
066	Light Green-White	0.1	0.1	0.1	0.1	0.1	0.1	0.1	0.1
067	Light Red-White	0.1	0.1	0.1	0.1	0.1	0.1	0.1	0.1
068	Light Yellow-White	0.1	0.1	0.1	0.1	0.1	0.1	0.1	0.1
069	Light Cyan-White	0.1	0.1	0.1	0.1	0.1	0.1	0.1	0.1
070	Light Magenta-White	0.1	0.1	0.1	0.1	0.1	0.1	0.1	0.1
071	Light Blue-White	0.1	0.1	0.1	0.1	0.1	0.1	0.1	0.1
072	Light Green-White	0.1	0.1	0.1	0.1	0.1	0.1	0.1	0.1
073	Light Red-White	0.1	0.1	0.1	0.1	0.1	0.1	0.1	0.1
074	Light Yellow-White	0.1	0.1	0.1	0.1	0.1	0.1	0.1	0.1
075	Light Cyan-White	0.1	0.1	0.1	0.1	0.1	0.1	0.1	0.1
076	Light Magenta-White	0.1	0.1	0.1	0.1	0.1	0.1	0.1	0.1
077	Light Blue-White	0.1	0.1	0.1	0.1	0.1	0.1	0.1	0.1
078	Light Green-White	0.1	0.1	0.1	0.1	0.1	0.1	0.1	0.1
079	Light Red-White	0.1	0.1	0.1	0.1	0.1	0.1	0.1	0.1
080	Light Yellow-White	0.1	0.1	0.1	0.1	0.1	0.1	0.1	0.1
081	Light Cyan-White	0.1	0.1	0.1	0.1	0.1	0.1	0.1	0.1
082	Light Magenta-White	0.1	0.1	0.1	0.1	0.1	0.1	0.1	0.1
083	Light Blue-White	0.1	0.1	0.1	0.1	0.1	0.1	0.1	0.1
084	Light Green-White	0.1	0.1	0.1	0.1	0.1	0.1	0.1	0.1
085	Light Red-White	0.1	0.1	0.1	0.1	0.1	0.1	0.1	0.1
086	Light Yellow-White	0.1	0.1	0.1	0.1	0.1	0.1	0.1	0.1
087	Light Cyan-White	0.1	0.1	0.1	0.1	0.1	0.1	0.1	0.1
088	Light Magenta-White	0.1	0.1	0.1	0.1	0.1	0.1	0.1	0.1
089	Light Blue-White	0.1	0.1	0.1	0.1	0.1	0.1	0.1	0.1
090	Light Green-White	0.1	0.1	0.1	0.1	0.1	0.1	0.1	0.1
091	Light Red-White	0.1	0.1	0.1	0.1	0.1	0.1	0.1	0.1
092	Light Yellow-White	0.1	0.1	0.1	0.1	0.1	0.1	0.1	0.1
093	Light Cyan-White	0.1	0.1	0.1	0.1	0.1	0.1	0.1	0.1
094	Light Magenta-White	0.1	0.1	0.1	0.1	0.1	0.1	0.1	0.1
095	Light Blue-White	0.1	0.1	0.1	0.1	0.1	0.1	0.1	0.1
096	Light Green-White	0.1	0.1	0.1	0.1	0.1	0.1	0.1	0.1
097	Light Red-White	0.1	0.1	0.1	0.1	0.1	0.1	0.1	0.1
098	Light Yellow-White	0.1	0.1	0.1	0.1	0.1	0.1	0.1	0.1
099	Light Cyan-White	0.1	0.1	0.1	0.1	0.1	0.1	0.1	0.1
100	Light Magenta-White	0.1	0.1	0.1	0.1	0.1	0.1	0.1	0.1

Our proven technology produces accurate, vibrant digital prints.



Did you know?

ONYX users enjoy optimized streamlined production for sign and graphic applications, backlit displays, high-volume printing, decals, floor graphics, vinyl wraps, decor, industrial print, soft-signage and textile.

The image displays two software windows. The 'Open' dialog box on the left shows a grid of image thumbnails with labels such as 'Perfect makeup logo.jpg', 'Old dock_bw logo.jpg', 'Lion bw logo.jpg', 'Lavender field logo.jpg', 'Hot peppers logo.jpg', 'Golden gate logo.jpg', 'Elephant face logo.jpg', and 'Candy colorful piece logo.jpg'. It also includes printer settings like 'Printer: (Default) Device: 1', 'Image: Capes: Auto', and 'Magnification: 100%'. The 'Printer and Media' panel on the right shows 'Maximum Print Area: 44 Inch Roll', 'Image Size' settings (W: 300.0mm, H: 346.79mm), and 'Crop Size' settings (W: 320.19mm, H: 346.79mm).



ONYX COLOR

Innovative color technologies

ONYX Color, the industry leading color engine and integrated color tools, ensures superior color accuracy, color consistency and conformance to standards you can prove to your customers.

Did you know?

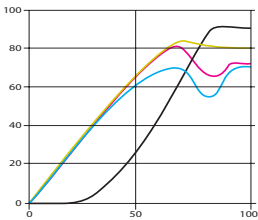
Onyx Graphics, Inc. has color at its core with unparalleled knowledge on all aspects of color and color management, resulting in our multiple technology patents.

Through an in-house team of color scientists and active involvement with the International Color Consortium (ICC), Onyx Graphics influences worldwide color standards.

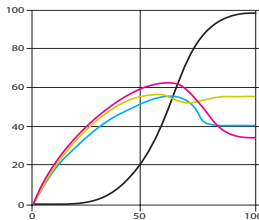


Save up to 30% ink with GCR+™

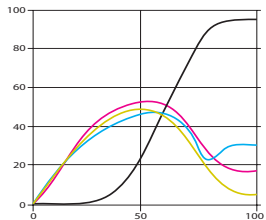
Default GCR



GCR Plus^o CMY = 50



GCR Plus^o CMY = 0

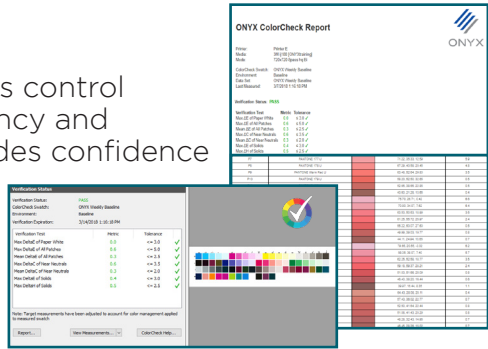


These illustrations demonstrate the CMYK combination for black generation across the tonal range. Each illustration represents one of the ONYX ICC Build Option Presets applied to the same ICC.

Color you can prove

ColorCheck™, a new set of process control tools for color accuracy, consistency and conformance to standards, provides confidence in meeting customer brand-color needs at the touch of a button.

In-product indicators alert users when to maintain or recalibrate printers, avoiding print errors.



Powerful tools for stunning color

ONYX software integrates the ONYX Color engine, new iccMAX compatibility, PosterColor 2.0, ColorCheck and AccuBoost to deliver color accuracy and saturation as well as expanded gamut size for amazing color output.

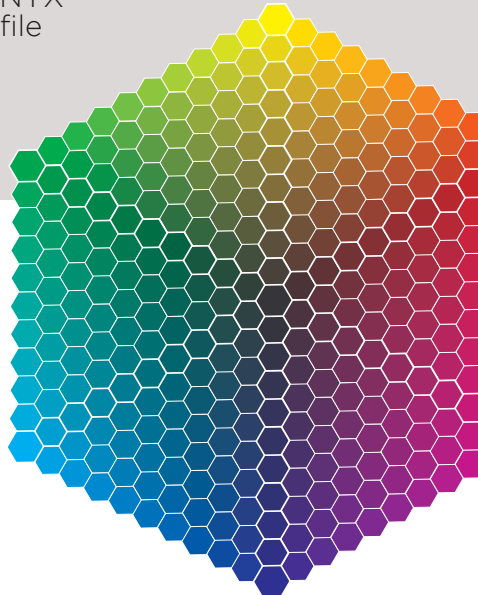
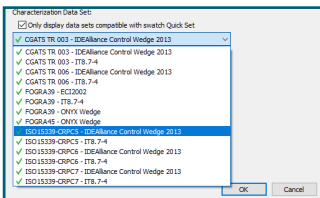
PosterColor 2.0, next generation technology designed by Onyx Graphics, delivers even greater saturation on solid colors using smart saturation rendering.

Users also benefit from AccuBoost, an iterative ICC profiling technique unique to ONYX software that enables pin-point profile accuracy.



Match standards

ONYX software enables verification and matching of standards such as G7 and Fogra with simple tools.

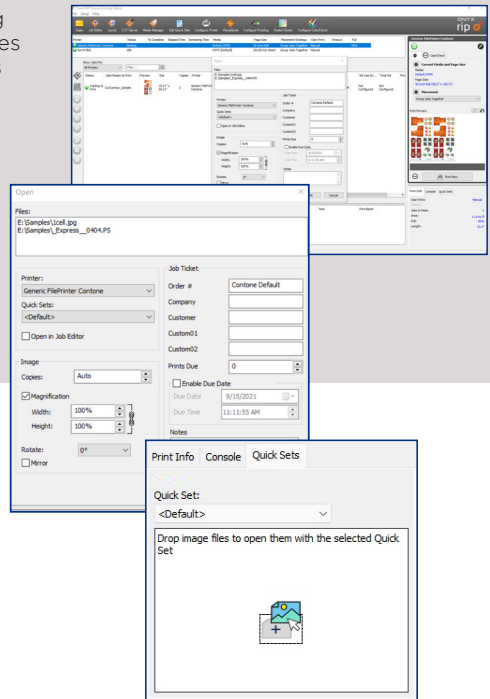


Designed for modern print businesses

ONYX 22 introduces a new drag-and-drop user experience with easy-to-use tools for everyday automation.

A new drag-and-drop user experience simplifies the print production process

- Drag-and-drop files directly to the RIP-Queue
- Drag-and-drop files into new Quick Sets tab to apply common job automation
- Make fast edits in fewer clicks before ripping including: page size, rotation, mirror, or copies
- Add important customer data and job notes that carry through to production
- Reduce manual errors on complex jobs

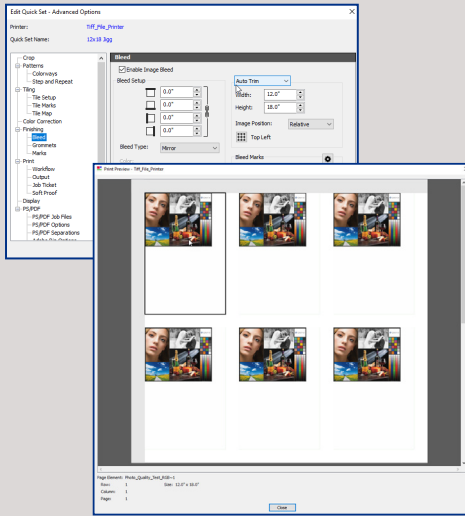
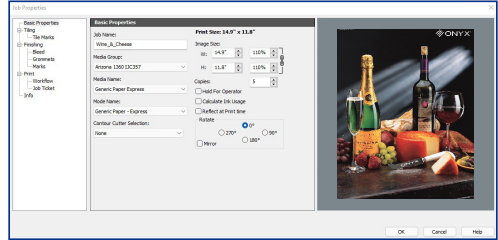


22

ONYX

Easy-to-use tools solve the need for everyday automation

- Smart job submission ensures prints match customer orders
- Define print settings including: copies, magnification, rotation, order number, customer and company name
- Filename print settings automatically apply in the RIP
- Automated job ticket information reduces manual error



- Enhanced nest management controls for artwork placement
- Auto-trim for flatbed and DTG printing
- Split copies into separate jobs to save on sheet media
- Choose to hold or release jobs on Row or Sheet based on the percentage full
- Automate settings using Quick Sets
- Remove unwanted marks or bleed with auto image cropping
- Check, install, update, or backup printer data directly from printer manager
- Install or update printers from the RIP-Queue

Intuitive color tools improve output accuracy for any printer

- New ONYX Color Reference Library
- Showcase coloroutput to print buyers
- Easy G7 calibration using ColorCheck
- Snapshot color calibration for contone printers
- D65 10° observer light measurement options for textile printing





A new way to experience ONYX software

ONYX Go is a month-to-month, no contract, ONYX RIP subscription with everything a print shop needs to get started in wide-format printing.

Compare Products

ONYX Go is a full-featured ONYX RIP solution and is available in two product offerings, ONYX Go lite and ONYX Go plus. Choose the solution that best fits the needs of your print business.

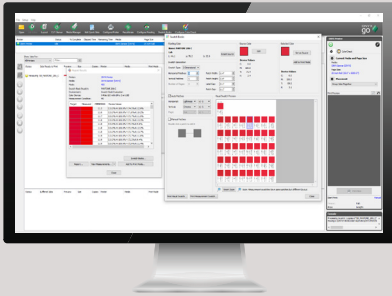
		
ONYX Color Engine	✓	✓
Spot color matching and correction	✓	✓
Print directly from design applications	✓	✓
Print-and-Cut workflows	✓	✓
Color managed large nesting previews	✓	✓
QuickSets 2.0 and Hot Folders for automation	✓	✓
Job Editor to edit and prepare files before printing	✓	✓
Integrated PANTONE library	✓	✓
Adobe PDF Print Engine (APPE) for multiple file handling	✓	✓
Automatic media savings for nested jobs	✓	✓
Unlimited roll-to-roll cutter support	✓	✓
Support for level 1 printers	✓	✓
Support for level 2 printers		✓
Production tools: Layout tool for manual nesting		✓
Production tools: Bleed and Grommet for file finishing		✓
Production tools: Swatch Books 2.0 for easy color matching		✓
Production tools: Specialty ink support for white ink		✓
Color management tools: DeviceLink+ to synchronize color output across devices		✓
Color management tools: ICC profiling and Media Manager		✓

Greater control for job preparation

- Job Editor with controls to crop, rotate, scale and color correct images
- Add tiles, bleed and grommets to save valuable job finishing time*
- Auto-generate registration marks and nest print-and-cut files
- Color-managed large previews
- Automate printing from design file to finished product using ONYX Quick Sets and Hot Folders



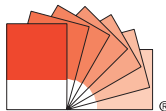
Intuitive tools for superior color output



- ONYX Color Engine designed specifically for wide-format printing
- Integrated PANTONE color library
- Industry standard color management
- Swatch Books 2.0 for easy color matching*
- ICC profiling build options*

The latest technology

ONYX uses the latest technology for superior output quality print buyers can trust.



*requires ONYX Go plus

ONYX SITE SOLUTIONS

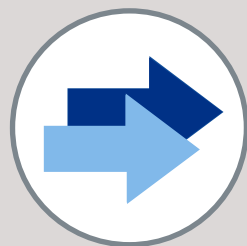
Bringing business & production together

ONYX SiteSolutions gives business owners and production managers accurate data about print jobs, actual costs and productivity across an entire site to increase efficiency and profitability.

Print Production

Modern print shops need reliable high performance technologies that give superior output.

- Built for speed on an all 64-bit platform
- ONYX Thrive is the only truly scalable solution
- ONYX Thrive grows with your business



This end-to-end PDF workflow solution with scalable RIPS and printers includes automation from digital file submission through color management, printing and cutting.



"We decided as a business we needed one solution for our entire site, something to help us grow and scale our efforts to do more in less time which helped lead us to Onyx Graphics."

- Gunther Fells, KL Druck.

Print Production	Workflow Connectors	Smart Data
<ul style="list-style-type: none"> • One RIP technology for the entire site to manage print production • Color tools for site-wide control across all devices • Complete 64-bit platform built for speed and reliability to do more in less time 	<ul style="list-style-type: none"> • Automated job submission through JDF workflows from design to print • Workflow integration across devices • Open architecture to take control of existing business tools to streamline and optimize workflows 	<ul style="list-style-type: none"> • Real-time, historic, trend data, and production information across the entire site • Dynamic production reporting by station, order and job including costs • ONYX Print Data Platform for one central repository for site-wide data collection

Workflow Connectors

In today's shops, business and production need to connect to compete.

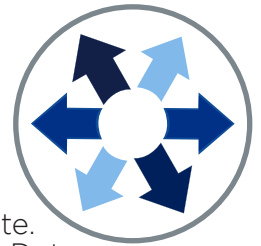
ONYX Connect and ONYX SwitchConnect provide a simple, open developer interface to connect existing business tools directly with ONYX software.



Smart Data

Business owners and production managers need tools to see accurate data about their jobs, their costs and productivity.

Onyx Graphics takes a unique approach to bring real-time, historic and trend data to your entire site. ONYX Hub utilizes data from our innovative Print Data Platform for real-time print production data, ink usage and media waste, job histories, ink and media costs, machine and labor rates to make better business decisions.



ONYX THRIVE

A solution that grows with your business

ONYX Thrive is the only truly scalable end-to-end workflow solution with network licensing to optimize any size print shop, maximize production and avoid costly downtime.

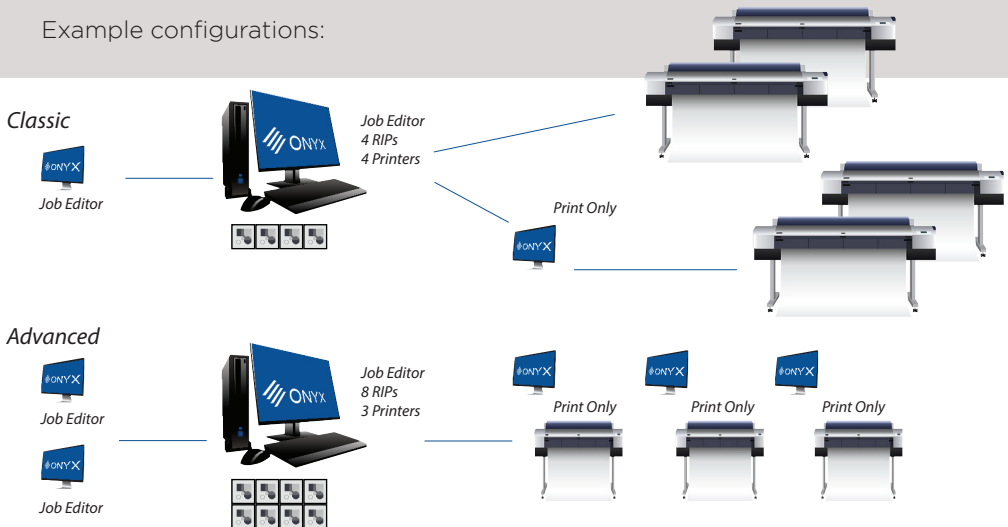
Scalable network for total flexibility

ONYX Thrive provides a network-based license for a long term solution to grow with your business. Users can easily add RIPs, printers, workflow modules and job editors to meet the demands of any print environment.

- Submit jobs from anywhere with Thrive Production Manager
- Take complete control of production at the click of a button
- Reduce prepress, proofing cycles and reworks

With 100% Adobe technology throughout, ONYX Thrive enables users to print right the first time.

Example configurations:



Scalability	Performance	Predictability
<ul style="list-style-type: none"> • Unlimited Thrive Production Manager for anywhere access to print production control • Add processing and printing capabilities independently • Access specific modules including ONYX Hub, ONYX Connect, ColorCheck and AccuBoost for the most powerful workflow • Job ticketing to track job data 	<ul style="list-style-type: none"> • QuickSets and unlimited Hot Folders to speed up production and minimize errors from design to print • RIP and print on the fly with multiple files simultaneously • Printer pooling and automated workflows • Automated nesting, tiling, and rotation with color managed previews including finishing marks 	<ul style="list-style-type: none"> • Adobe technology throughout • Unique PowerChroma Black Generation and integrated ink savings with GCR+ • Color Swatch Books color selection and matching including white and specialty ink support • ChromaBoost gamut mapping and extensive finishing and job editing tools

Reach new heights with ColorCheck

Exclusive for ONYX Thrive is ColorCheck: a new process control tool for users to prove color accuracy, consistency and conformance to standards including G7 and Fogra.



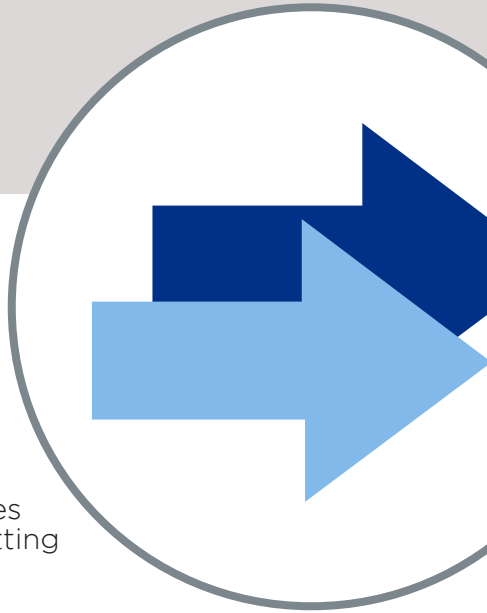
Easily match your customer brand-color needs consistently over time across all your devices and build repeat business.

“ONYX Thrive has had a large impact on our business. With as much equipment as we have running at any one time, Thrive has been instrumental in keeping us fast, reliable and consistent.”

- Aaron Holland, DSR.

Step and Repeat:

With applications into decor, decal printing and soft signage, ONYX Thrive Step and Repeat allows users intuitive control to create patterns with PDF or any raster images and automated cutting workflows.



ONYX HUB 2.0

Real data for better business decisions

ONYX Hub provides real-time and historic data plus actual job costs in an intuitive dashboard. ONYX Hub 2.0 brings data protection with secure server encryption, new user account controls and streamlined job submission from a central location.

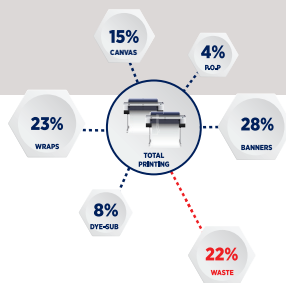
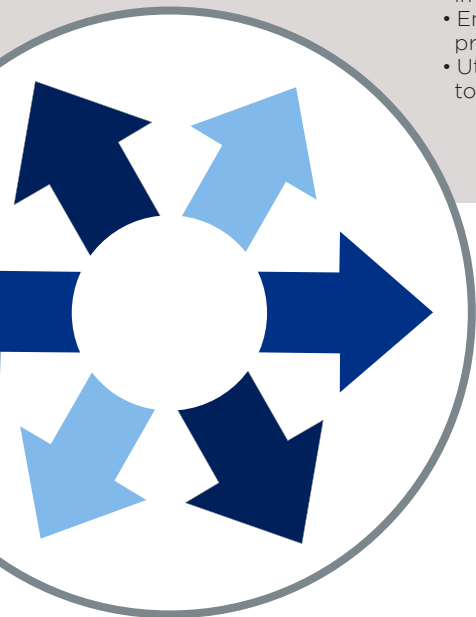


Bringing business and production together

ONYX Hub helps business and production managers answer the question “How profitable am I?” with site-wide production data as well as intuitive reporting to ensure production efficiency.

ONYX Hub 2.0 keeps customer information secure and protects sensitive print production data with new HTTPS browsing and active user management controls.

- Provide custom views for printer utilization, ink and media waste reporting
- Provide relevant data to showcase business impact at every level of print production
- Enable specific user controls for optimal print production management
- Utilize new HTTPS secure browser encryption to protect customer information



“ONYX Hub gives us the tools to make business decisions on our workflows, job estimation and it’s already improving our bottom line. We definitely feel the impact of ONYX Hub on our business.”

- Geert Peeters, Dr. Sticker.

A better way to manage job submission

New job-submission capabilities in ONYX Hub 2.0 improves production efficiency from pre-press to production, saving valuable time to print more jobs per day.



- Submit jobs from one central location to any printer
- Reduce manual error by submitting jobs directly into ONYX Thrive
- Track job status in real-time at the click of a button
- Apply print job edits or add automation using Quick Sets to save time during production
- Positively impact the bottom line with improved job submission print processes

Use real data with optimized viewing on any device

ONYX Hub provides one-click access to data from all aspects of print production to improve production efficiency, eliminated bottlenecks and improve print processes.

ONYX Hub 2.0 introduces a new responsive design and reporting dashboards that automatically optimize for use on any device.

- Access business and production data in real-time with optimized viewing on desktop, tablet or phone web browsers
- Easily navigate from the home page to reporting dashboards
- Consume easy to understand ink and media usage and waste reports
- Easily see actual print costs by job or order
- Use actual print production data to make better business decisions



How to get ONYX Hub

New users can try ONYX Hub 2.0 free for 30 days.

Existing ONYX Thrive users gain instant access by subscribing to ONYX Advantage Gold.

Visit onyxgfx.com for details.

ONYX
advantage 
Gold

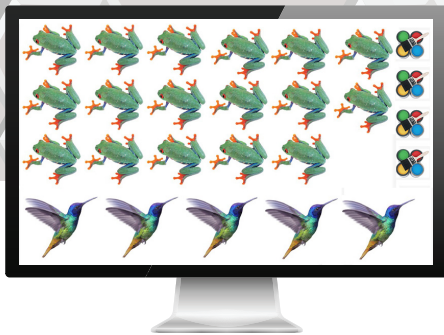
ONYX TRUFIT

True shape nesting for any print environment

Save valuable print production time and maximize media usage with shape-based nesting. Easily create complex nested layouts and reduce media usage by up to 50%.

ONYX TruFit artificial intelligence searches millions of combinations to achieve optimal media utilization.

- Easily create optimized shape-based nests
- Automatic cut-path and tool-type recognition from design files
- Eliminate excess white space and crop layouts on multi-page PDFs
- Real-time savings data on media utilization during nest creation

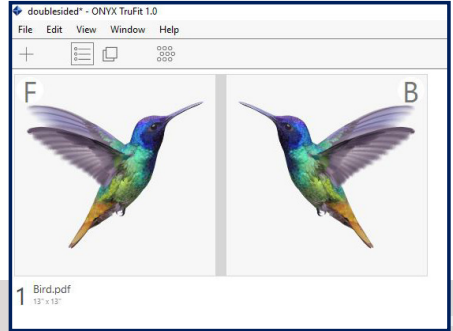


49.8%
Media Savings



Intuitive tools bring speed and simplicity to the most complex nested layouts.

- Outline images with a single click with image tracing
- Add or edit multiple cut-paths and assign tools for any cut application
- Generate double-sided images instantly



- Combine multiple files into a single layout
- Map custom cut-paths to common names
- Export files directly to ONYX using hotfolders for automated cut workflows
- Generate printable PDF files for any solution
- Original file properties unchanged, including named colors, transparencies and color management

Eliminate costly software changes

- Works seamlessly across Windows or MAC OS platforms using open architecture
- Integrates into all existing RIP solutions
- Simple to operate from Designer to Print Operator



Try it free for 30 days. Visit www.onyxgfx.com for details.






ONYX RIP PRODUCTS

Simplicity in achieving superior prints

ONYX PosterShop and ONYX RIPCenter provide a versatile tool set with color managed output that is easy to use. Add automation with finishing tools for complete print-and-cut workflows.

Compare RIPs

	ONYX ripcenter 	ONYX postershop 	ONYX thrive 
ONYX Color Engine	✓	✓	✓
The latest Adobe PDF Print Engine	✓	✓	✓
Virtual printer support	✓	✓	✓
iccMAX compatibility	✓	✓	✓
Color managed large nesting previews	✓	✓	✓
QuickSets 2.0 for automation	✓	✓	✓
Cut-only workflows and finishing marks	✓	✓	✓
Automatic spot color matching and replacement	✓	✓	✓
Finishing tools: Grommets and Bleed		✓	✓
Finishing tools: Sewing Marks		✓	✓
ICC Profile building		✓	✓
Manual nesting layout and variable data printing		✓	✓
PowerChroma™ with GCR+™ ink savings		✓	✓
Color Swatch Books		✓	✓
Optional flat-bed cutting support		✓	✓
Thrive Production Manager access from anywhere			✓
Integrated G7 verification			✓
Step and Repeat tool			✓
Network licensing for scalable print production			✓
AccuBoost iterative ICC profiling for accuracy			✓
ColorCheck for accuracy and consistency*			✓
ColorCheck standards matching: G7 and Fogra*			✓
Access to ONYX Hub*			✓

* available with ONYX Advantage Gold subscription

Color Management	Job Preparation	Finishing & Cutting
<ul style="list-style-type: none"> • Build ICC profiles with ONYX PosterShop • Print > Read > Next media profiling to easily maximize output quality • Optimized out-of-the-box presets for quick installation to get up and running • PowerChroma ink savings technology improves profitability 	<ul style="list-style-type: none"> • QuickSets and unlimited hot folders to speed up production and minimize errors from design to print • Job ticketing to track job data • Color Swatch Books color selection and matching • Easily modify jobs without leaving the RIP-Queue into other applications 	<ul style="list-style-type: none"> • A fully integrated print-and-cut workflow with ONYX PosterShop • Preview cut-paths that are instantly recognized from Adobe CC applications • Add finishing marks using ONYX PosterShop with color managed previews • Cut-only workflows to import jobs directly into CUT-Server

Powerful fast predictable output

ONYX RIP products now include the latest Adobe PDF Print Engine to further enhance the power of ONYX for shops with up to 2 printers.

- Easily manage any ONYX production environment
- Optimized out-of-the-box presets
- Automation with ONYX QuickSets to get to sellable prints faster



"We've used other RIPs and couldn't hit color. We put it in ONYX once and it's perfect. It's definitely made my life easier and saved us on rework waste by printing right the first time."

- Rick Gaskins, Frontline Wraps.



ONYX ADVANTAGE

Secure your investment, keep current

ONYX Advantage is so much more than a cost effective way to keep your software current. It provides access to new versions, additional tools for maximizing production, drivers, support, training and on-demand how-to videos.

Did you know?

ONYX Advantage holders receive new version and update product releases of ONYX software through an online portal as part of the annual subscription as well as access to global support.

Additionally, new drivers are added every month to our existing library of over 2500+ supported devices, making future printer, cutter and color device purchase choices easy.

Upgrade to the latest version of ONYX software through ONYX Advantage and save up to 25% on the cost of product updates over 3 years.

Contact your Authorized ONYX Reseller or visit onyxgfx.com to get started today.



"ONYX is the way to build ICC profiles, the results with this latest version are stunning. The improvements I've seen really raises the bar. ColorCheck works very well indeed. Being able to prove color, match standards and maintain consistency helps my customers and my business."

- Kevin Stallibrass, Paper Graphics.

ColorCheck is available through an ONYX Advantage Gold subscription.

Security	Peace of Mind	Value
<ul style="list-style-type: none"> • Always have the latest version with maximum feature sets • Adobe power throughout with minimal cost via subscription • Don't fall behind technology developments and product release cycles • Access to global technical support 	<ul style="list-style-type: none"> • Access to new printer drivers as they become available each month • Avoid surprise costs for new product releases • Get access to on-demand training and videos through myonyx and ONYX TV for free 	<ul style="list-style-type: none"> • Free access to white papers and training how-to documentation • Free access to our global support call-center • Free hardware key replacement • Access to ONYX Hub, ColorCheck and other add-on modules for a fraction of the cost via subscription

ONYX Advantage includes specific programs to match product and business needs. ONYX Advantage Silver and Gold are premier programs for ONYX Thrive and for access to modules such as ColorCheck.

ONYX Advantage is also available for our RIP products including ONYX PosterShop and ONYX RIPCenter.

Compare tiers

	ONYX advantage Silver	ONYX advantage Gold
Access to global technical support team	✓	✓
Access to customer support telephone hot-line	✓	✓
ONYX support online access with myonyx	✓	✓
Access to the latest product downloads	✓	✓
Access to printer, cutter and color device drivers	✓	✓
Access to new version releases	✓	✓
Free hardware key replacement	✓	✓
On-demand video training	✓	✓
Special access to product whitepaper guides	✓	✓
Quick tips and tricks how-to guides	✓	✓
Access to ONYX Hub business intelligence		✓
Access to ColorCheck: Named Colors		✓
Access to ColorCheck: Print Gamut Verification		✓
Access to ColorCheck: Baselines and Process Control		✓
Access to ColorCheck: G7 and FOGRA standards		✓

NOTES:

For more information, contact your
Xerox Authorised Channel Partner...

Colyer.

hello@colyer.co.uk | UK: 01483 596200 | www.colyer.co.uk



For more information contact your
Authorized ONYX Reseller
or visit onyxgfx.com

